

Part 2 – Attaching the Arms to the Display

Important! Use extra care during this part of the installation. If possible, avoid placing your display facedown as it may damage the viewing surface.

NOTE: Your mount comes with a selection of bolt diameters and lengths to accommodate a wide variety of display models. Not all of the hardware in the kit will be used.

- Determine the correct length of bolt to use with your display by first examining the back of your display.
 - A.** If your display has a flat back, you will use one of the shorter bolts (A, D, G, or J) from the hardware kit.
 - B.** If your display has a curved or recessed back, you will use one of the longer bolts (B, E, H, or K) along with a spacer (M or N).
- Determine the correct diameter of bolt to use by carefully trying one bolt each from Bags 1 - 4 of the hardware kit. Do not force any of the bolts – if you feel resistance stop immediately and try a smaller diameter bolt.
- Attach the arms to the back of your display using the bolts identified in Steps 1 and 2 along with the corresponding Lock Washer (C, F, I, or L) (see Fig. 2 and 3).
 - A.** If you are using the M4, M5, or M6 bolts (Bags 1, 2, and 3 respectively), you will also need to use the M6 Washers (O).
 - B.** If you are using one of the longer bolts on a display with a curved or recessed back, you will also use a Spacer (M or N). Use the Smaller Spacer (M) for M4 and M5 bolts and the Large Spacer (N) for M6 and M8 bolts.
- Make sure all screws are secure, but do not over-tighten them.

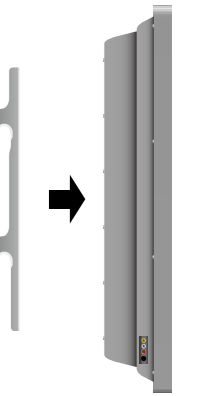


Fig. 2 - Attach the arms to the back of your display.

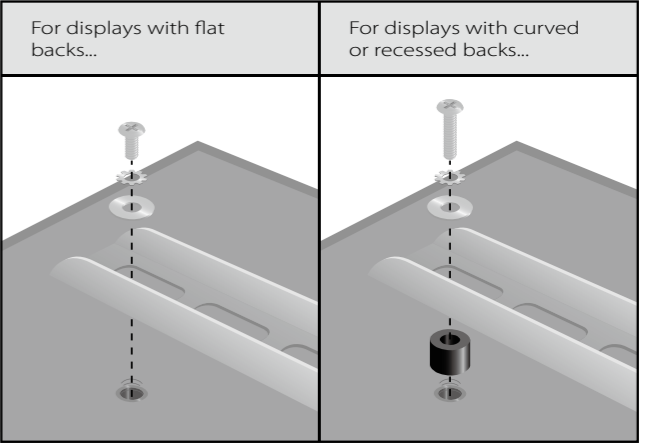


Fig. 3 - Use a longer bolt and spacer for displays with curved or recessed backs. Do not use the M6 Washer (O) if you are using the M8 Bolts (J or K).

Part 1a – Mounting the Wall Plate (Drywall)

Important! For safety reasons, this mount must be secured to two adjacent wood studs at least 16" apart. The studs must be capable of supporting the combined weight of the mount and display.

- Using a stud finder, locate and mark two adjacent studs for securing the mount.
- With the help of another person, place the mount against the wall and level it using the bubble guide.
- While another person holds the mount in place, mark four locations (two per stud) on the wall where the mount is to be installed. Be sure to use the center of each stud.
- Set the mount aside and drill a 1/4" (6 mm) pilot hole at each marked location.
- Place the mount back against the wall and secure it using the Lag Bolts (Q) and Lag Bolt Washers (R) provided (see Fig. 1). Do not over-tighten these bolts and do not release the mount until all bolts are in place.

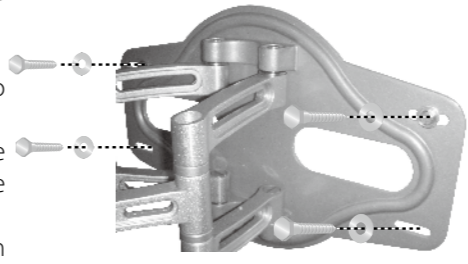


Fig. 1 - Attach the wall plate to the wall.

Part 1b – Mounting the Wall Plate (Concrete)

Important! For safety reasons, the concrete wall must be capable of supporting the combined weight of the mount and display.

- With the help of another person, place the mount against the wall and level it using the bubble guide.
- While another person holds the mount in place, mark four locations on the wall where the mount is to be installed.
- Set the mount aside and drill a 7/16" (11 mm) pilot hole at each marked location. Remove any excess dust from the holes.
- Insert a Concrete Anchor (P) into each hole so that it is flush with the concrete surface. A hammer can be used to lightly tap the anchors into place if necessary.
 - NOTE:** If the concrete wall is covered by a layer of plaster or drywall, the concrete anchor must pass completely through the layer to rest flush with the concrete surface.
- Place the mount back against the wall and secure it using the Lag Bolts (Q) and Lag Bolt Washers (R) provided (see Fig. 1). Do not over-tighten these bolts and do not release the mount until all bolts are in place.

4 Part 3 – Final Installation and Adjustment

- With the help of another person, carefully lift your display and place it on mount (see Fig. 4). Place the display in the middle of the mount, and do not release the display until the mounting arms have securely hooked onto the crossbars.
- Move the safety tab located on each arm into position to avoid having the display accidentally lifted from the mount. A padlock can be inserted into one of the tabs to help prevent theft of your display (see Fig. 5).
- The cable management clips can be used to keep your power cord and other cables in order.
- Side-to-side and front-to-back adjustments can be made by firmly grasping your display and carefully moving it to the desired position.
- If any of the arms become too loose to hold their position, they can be tightened using the Alley Key provided in your hardware kit (see Fig. 6).
- To adjust the tilt position of your display, have one person hold the display in place while another person loosens the two tilt adjustment knobs located on either side of the mount (see Fig. 7). Once the knobs are loose, move the display to the desired angle. Tighten the knobs securely before releasing the display.
- If you find that your display is not level, first loosen the horizontal adjustment screw located behind the mount (see Fig. 8) using the Allen Key provided in your hardware kit. Carefully level your display and re-tighten the adjustment screw.

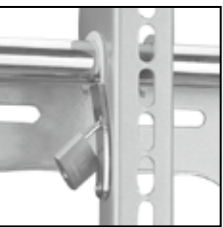


Fig. 5 - A small padlock can be used to help prevent theft of your display.

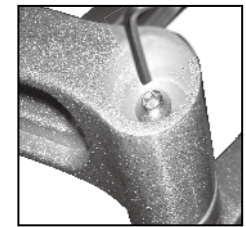


Fig. 6 - Use the Alley Key to tighten the arms and prevent unwanted movement.

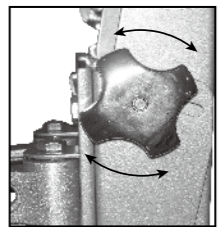


Fig. 7 - Loosen the adjustment knobs to change the tilt angle. There is one knob on each side of the mount.

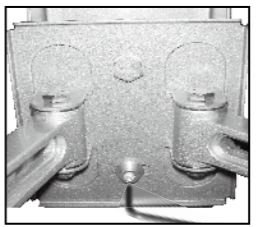


Fig. 8 - Use the Alley Key to loosen the horizontal adjustment screw and level your display.

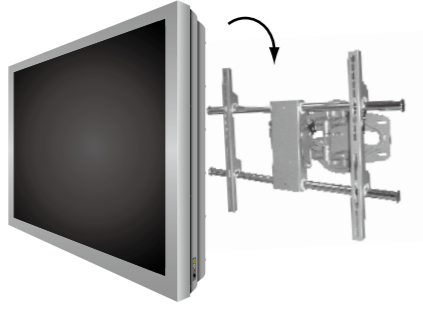


Fig. 4 - Carefully hook the display onto the wall plate.

P17/R1.1
Articulating LCD/Plasma Wall Mount Installation Instructions

Tools Required

- Phillips Head Screw Driver
- Ratchet or Driver with 1/2" (13 mm) Socket
- Electric Drill
- 1/4" (6 mm) Drill Bit and Stud Finder for Drywall Installation
- 7/16" (11 mm) Masonry Bit for Concrete Installation

Warnings

- Make sure these instructions are read and thoroughly understood before attempting installation. If you are unsure of any part of this installation, contact a professional installer for assistance.
- The wall or mounting surface must be capable of supporting the combined weight of the mount and the display; otherwise the structure must be reinforced.
- Safety gear and proper tools must be used. Failure to do so can result in property damage and/or serious injury.
- A minimum of two people are required for this installation. Do not attempt to install this mount alone under any circumstance.
- Follow all instructions and recommendations regarding adequate ventilation and suitable locations for mounting your display. Consult the owner's manual for your display for more information

Hardware Kit

Bag #	(Ref) Item (Qty)		
1	(A) M4x12 Bolt (x4)	(B) M4x30 Bolt (x4)	(C) M4 Lock Washer (x4)
2	(D) M5x12 Bolt (x4)	(E) M5x30 Bolt (x4)	(F) M5 Lock Washer (x4)
3	(G) M6x12 Bolt (x4)	(H) M6x35 Bolt (x4)	(I) M6 Lock Washer (x4)
4	(J) M8x16 Bolt (x4)	(K) M8x40 Bolt (x4)	(L) M8 Lock Washer (x4)
5	(M) Small Spacer (x4)	(N) Large Spacer (x4)	(O) M6 Washer (x4)
6	(P) Concrete Anchor (x4)	(Q) M8x63 Lag Bolt (x4)	(R) Lag Bolt Washer (x4)